



2017

Health & Safety centre

Prevention Through Education

Course Guide and Schedule



Find us and follow at



BCFEDOHS



BC FED Health Safety Centre

www.healthandsafetybc.ca



B.C. Federation
of Labour (CLC)

BCFED OH&S Centre Programming

- We have become **the largest** provider of health and safety education for **OH&S Committees** in the Province of BC.
- Our new **Supervisor OH&S Responsibilities** Program stream has had unprecedented uptake.
- Our **Return to Work** Program has been influencing change in workplace practices.
- Our **Building Psychologically Healthy Workplaces** Program is responding to evolving workplace needs.
- We are the largest provider of facilitator-led, peer-to-peer **Young and New Worker** OH&S Rights Education in the Province.
- Our **Employment Program** OH&S reaches at-risk and marginalized youth.
- The Centre is a primary provider of targeted OH&S education for **Migrant Workers**.
- We provide one-of-a-kind OH&S education through our **EAL** program for new Canadians.



For more information on our Young & New Worker, Employment Program, Migrant Worker, and EAL Programs, please go to www.healthandsafetybc.ca

2017 Course Guide

OH&S COMMITTEE EDUCATION

OH&S Committee Part 1 (Updated)	OHS 101	3
OH&S Committee Part 2 (Updated)	OHS 102	3
Improving Committee Effectiveness (Updated)	OHS 103	4

SUPERVISOR EDUCATION

Supervisor OH&S Responsibilities Part 1	SUP 101	5
Supervisor OH&S Responsibilities Part 2	SUP 102	5

OH&S SKILLS - SPECIFIC

Incident Investigations	INV 101	6
Risk Assessment	RAS 101	6
OH&S Legislation Update (New)	LEG 101	6

RETURN TO WORK

Improving Return to Work Outcomes	RTW 101	7
Accommodating Mental Health Issues	RTW 102	7
Return to Work Program Development & Assessment		7

OH&S HAZARD SPECIFIC

Introduction to Occupational Health	OCC 101	8
Prevention of Violence in the Workplace	PVW 101	8
Emergency Preparedness (Updated)	EMGP 101	9
Women's Health & Safety in the Workplace	WOM 101	9
Strains, Aches & Pains: Ergonomics	ERGO 101	9

BUILDING PSYCHOLOGICALLY HEALTHY WORKPLACES

Bullying & Harassment	B&H 101	10
Stress in the Workplace	STRESS 101	10
Psychological Health CSA Standard (New)	CSA 101	10

SECTOR SPECIFIC

Federal Health & Safety Committee & Supervisor Education		11
Mining Sector Health & Safety and Committee Education		11
Advanced OH&S Skills Development Summer School		11

OH&S COMMITTEE EDUCATION

OCCUPATIONAL HEALTH & SAFETY COMMITTEE PART 1

OHS 101

(UPDATED)

This introductory or 'fundamentals' Occupational Health and Safety course will introduce new committee members to the basic principles of workplace health and safety. This course also serves as a great 'Back to Basics' course for those OH&S Committee members who desire refresher training.

In this course participants will:

- Learn the legal responsibilities, duties and functions of the Joint OH&S Committee and Worker Representatives.
- Learn about health and safety legislation (Provincial & Federal), workplace parties' rights & responsibilities including the Right to Refuse unsafe work.
- Indicate key elements of having an effective committee and the process of evaluation.
- Identify the legal requirements of workplace Inspections and Investigations
- Understand how to conduct effective workplace inspections
- Learn about principles of workplace assessment and control strategies.

Note: This course meets the pending (Provincial) mandatory minimum training requirements for new joint committee members. (Effective April 2017)

- OHSR 3.27 Minimum training requirements for new joint committee members or worker health and safety representatives
- (2) The employer must ensure that each member of the employer's joint committees who was selected on or after June 1, 2017 to be a member receives, as soon as practicable but no more than 6 months after becoming a member, a total of at least 8 hours of instruction and training, as set out in subsection (4).
- (6) Subsection (2) does not apply in respect of a person who is a member of a joint committee if (a) 2 years or less before becoming a member of the joint committee, the person was a member of that joint committee or a different joint committee, and (b) the person received at least 8 hours of instruction and training on the topics described in subsection (4).
- (10) For greater certainty, the instruction and training required under subsection (2) or (3) of this regulation is not educational leave as set out in section 135 of the Workers Compensation Act.

Audience: OH&S Committee Members, Managers and Worker Representatives.

**Federal OH&S Legislation specific version and Healthcare version available on request*

OCCUPATIONAL HEALTH & SAFETY COMMITTEE PART 2

OHS 102

(UPDATED)

The OH&S Part 2 course has been designed to allow participants to pick up where our OH&S Part 1 leaves off and further develop the concepts, tools and resources needed to tackle OH&S issues at their workplaces.

In this course participants will:

- Understand Hazard Identification and Assessment & Control Principles. (Inspections, Job Safety Analysis, Work Procedures and Hazard Reporting Methods).
- Discuss legal requirements (Provincial & Federal) and elements of an effective health & safety program.
- How to research and utilize OH&S Legislation.
- Learn hazard control principles, setting priorities, hierarchy of controls & developing effective recommendations.
- Introduction to the importance of understanding health hazards as part of Hazard Identification.

Audience: OH&S Committee Members, Managers and Worker Representatives.

Prerequisite: Completion of the OH&S Part 1 course is required before taking this course.

**Federal OH&S Legislation specific version and Healthcare version available on request*



SECTION 135

Workers Compensation Act

- 135 (1) Each member of a joint committee is entitled to annual education leave totaling eight (8) hours, or a longer period if prescribed by regulation, for the purposes of attending occupational health and safety training courses conducted by or with the approval of the Board.
- (2) A member of the joint committee may designate another member as being entitled to take all or part of the member's educational leave.
- (3) The employer must provide the educational leave under this section without loss of pay or other benefits and must pay for, or reimburse the worker for, the costs of the training course and the reasonable costs of attending the course.

IMPROVING COMMITTEE EFFECTIVENESS

(UPDATED)

We've heard from many Joint OH&S Committee (JHSC) members about their successes and their challenges. This course has been designed to allow participants to evaluate their JHSC performance, and develop the tools, resources and strategies to build on their successes and to tackle the tough OH&S issues at their workplaces.

In this course participants will:

- Indicate key elements of an effective JHSC committee.
- Identify barriers facing a JHSC and develop practical strategies and solutions to deal with them.
- Understand group dynamics and stages of group development.
- Practice how to solve issues and understand the dispute resolution process.
- Learn how to assess JHSC activities and create a written evaluation.
- Learn how to develop short and long-term goals for the JHSC for making changes to improve health and safety.

Note: Pending (Provincial) requirement for an evaluation process to measure the effectiveness of joint health and safety committees. (Effective April 2017)

OHSR 3.26 Evaluation of joint committees

(2) An employer must ensure that, with respect to each of the employer's joint committees, a written evaluation is conducted annually by

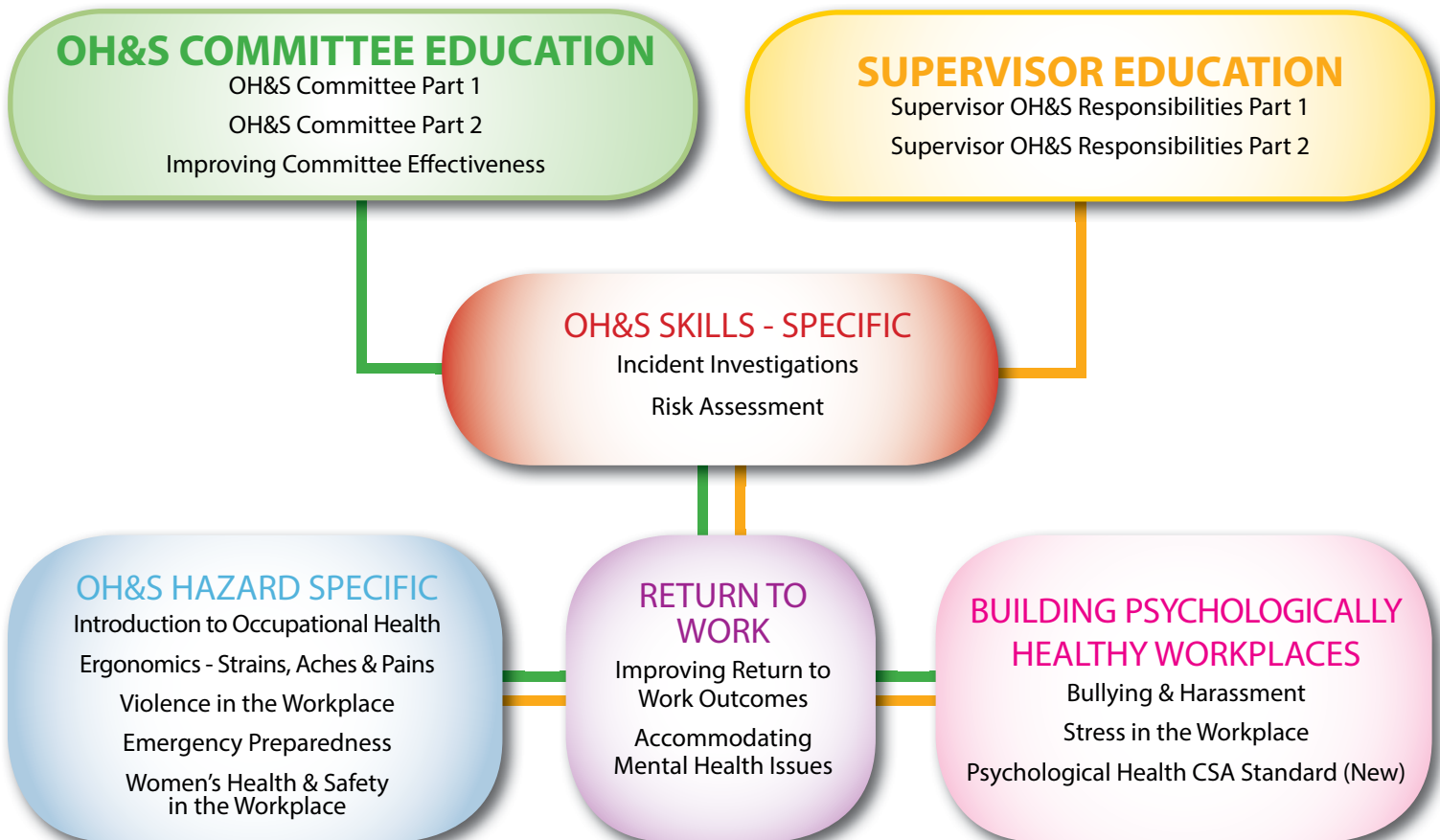
- (a) the co-chairs of the joint committee or, with respect to each co-chair, the member or members of the joint committee designated by the co-chair, or
- (b) the employer or a person retained by the employer.

Audience: OH&S Committee Members, Managers, Worker Representatives and Supervisors.

Prerequisite: Completion of the OH&S Part 1 course is required before taking this course.

OH&S Learning Streams

We have designed our course offerings to provide participants with a sequential learning progression, followed by content that can meet the needs of participant OH&S responsibilities or specific workplace hazards.



SUPERVISOR EDUCATION

SUPERVISOR OH&S RESPONSIBILITIES PART 1

SUP 101

Supervisors play a critical role in the workplace because they have the authority to oversee the work of others. As such, supervisors have considerable responsibilities under Occupational Health & Safety Legislation. A supervisor is required to be qualified by knowledge, training and experience in the work they oversee, be familiar with the legislation that applies to their workplace and knowledgeable about actual or potential workplace hazards, so they can, in turn, advise workers about these hazards.

In this course participants will:

- Discuss legal requirements and responsibilities (Provincial and Federal).
- State the supervisor's role in addressing work refusals and conducting investigations.
- Identify the supervisor's role in conducting workplace inspections.
- Learn the principles of demonstration of "due diligence".

This program also reviews relevant case law and provisions of the Criminal Code of Canada (Bill C-45) to help participants better identify types of work that are supervisory in nature and their related legal duties, and understand the consequences of non-compliance.

Audience: Supervisors, Managers and Worker Representatives.

**Federal OH&S Legislation specific version available on request*

SUPERVISOR OH&S RESPONSIBILITIES PART 2

SUP 102

The Supervisor Part 2 course has been designed to allow participants to pick up where our Supervisor Part 1 leaves off and further develop the concepts, tools and resources needed to tackle supervisor roles and responsibilities at their workplaces. Completion of this course will further enhance those skills you've obtained from your workplace experience and the completion of Supervisor Part 1.

In this course participants will:

- Understand the supervisor's role in interpreting OH&S legislation.
- Learn how to develop and implement SWP's (safe work procedures) specific to OH&S programs.
- Understand the supervisor's role in demonstrating leadership.
- Learn how to be an effective communicator by developing and conducting a safety crew talk.
- Understand the role of the Inspection Authority in your workplace.

Audience: Supervisors, Managers and Worker Representatives.

Prerequisite: Completion of the Supervisor OH&S Part 1 course is required before taking this course.

**Federal OH&S Legislation specific version available on request*



SECTION 117

Workers Compensation Act - General Duties Of Supervisors

- (1) Every supervisor must:
 - (a) ensure the health and safety of all workers under the direct supervision of the supervisor,
 - (b) be knowledgeable about this Part and those regulations applicable to the work being supervised, and
 - (c) comply with this Part, the regulations and any applicable orders.
- (2) Without limiting subsection (1), a supervisor must
 - (a) ensure that the workers under his or her direct supervision
 - (i) are made aware of all known or reasonably foreseeable health or safety hazards in the area where they work, and;
 - (ii) comply with this Part, the regulations and any applicable orders,
 - (b) consult and cooperate with the joint committee or worker health and safety representative for the workplace, and
 - (c) co-operate with the Board, officers of the Board and any other person carrying out a duty under this Part or the regulations.

"supervisor" means a person who instructs, directs and controls workers in the performance of their duties

OH&S SKILLS - SPECIFIC

INCIDENT INVESTIGATIONS INV 101

When an incident or “near hit” happens at the workplace, an investigation by the employer and the OH&S Committee must take place. This legal requirement has been solidified in legislation passed in May 2015, with Bill 9, in response to the tragic mill explosions in 2012. Committees are now required to perform a preliminary investigation within 48 hours of an incident occurring and then a comprehensive investigation within 30 days. Incident investigation is a serious matter. It is your responsibility to gather the facts, objectively assess those facts, and arrive at corrective recommendations to prevent future incidents.

Incident investigations are a fundamental function and responsibility of supervisors and Joint Health and Safety Committees but, often we don't have the proper insight on how to conduct an effective investigation. This course will provide you with the opportunity to improve your investigative skills, determine 'root causes' and develop effective recommendations.

In this course participants will:

- Learn the new legal requirements for incident investigations.
- Examine the principles of incident causation.
- Learn how to conduct a proper investigation by gathering the facts.
- Learn how to analyze the results of your investigation and determine contributing factors and root causes.
- Learn how to prepare reports and develop effective corrective actions.
- Conduct a class incident investigation and put theory to practice.

Audience: OH&S Committee Members, Managers, Worker Representatives, and Supervisors.

**Federal OH&S Legislation specific version (Hazardous Occurrence Investigations) available on request.*

Note: Pending (Provincial) legislation is clarifying the meaning of “participation” in section 174 of the Act (Effective April 2017)

OHSR 3.28 Participation in Investigations Participation by employer or representative of employer and worker representative

For the purposes of section 174 (1.1) (c) of the Act, the following activities are prescribed:

- (a) assisting the persons carrying out the investigation with gathering information relating to the investigation;
- (b) assisting the persons carrying out the investigation with analyzing the information gathered during the investigation;
- (c) assisting the persons carrying out the investigation with identifying any corrective actions necessary to prevent recurrence of similar incidents.

UNDERSTANDING & CONDUCTING RISK ASSESSMENTS RAS 101

Assessing risk is an approach to occupational health & safety. Both Federal and Provincial OH&S Legislation requires all employers to assess risk in the workplace in a variety of situations. This course will cover when a risk assessment must be completed and will give participants hands-on experience in a variety of different methods of conducting risk assessments.

In this course participants will:

- Learn about the risk assessment process specific to hazard identification, analyze and evaluate the risk associated with the hazard and determine appropriate ways to eliminate or control the hazard.
- Learn in practical terms that a risk assessment is a thorough look at your workplace specific to things that may cause harm to workers.
- Summarize hazard prioritization and precautionary principles.
- Learn how to generate awareness of hazards and risks.
- Learn how to implement controlled measures, as a result of conducting a risk assessment.
- Discuss the requirements, who is responsible for meeting them and consequences of non-compliance.

Audience: OH&S Committee Members, Managers, Worker Representatives, and Supervisors

Prerequisite: Completion of the OH&S or Supervisor Part 1 course is required before taking this course.

*Federal OH&S Legislation specific version available on request

OH&S LEGISLATION UPDATE (New) LEG 101 ON REQUEST ONLY

The BCFED OH&S Centre is offering a unique opportunity for participants to update their Occupational Health & Safety knowledge on existing and new OH&S Legislation (both Provincial & Federal). Let us facilitate discussion to help your leadership improve their knowledge and skills and discover the tools available to effectively tackle OH&S issues in your workplaces.

In this course participants will:

- Review pending changes to OH&S Committee Legal Duties & Functions.
- Review Accident Investigation procedure changes as a result of Bill 9.
- Review Bullying & Harassment and Ergonomics regulation requirements.
- Understand Risk Assessment process and legal requirements.
- Review the new WHMIS (GHS) Requirements.
- Discuss how Duty to Accommodate (RTW) relates to OH&S.

Audience: OH&S Committee Members, Managers, Worker Representatives and Supervisors.

RETURN TO WORK

IMPROVING RETURN TO WORK OUTCOMES RTW 101

As disability-related costs increase, workplaces struggle with re-integrating workers with disabilities. Return to Work (RTW) education simplifies this process by focusing on RTW as a Health & Safety issue that must respect the fundamental principles of human rights. This workshop utilizes research-based RTW practices to equip participants with effective tools and strategies to improve the facilitation of successful work reintegration outcomes.

In this course participants will:

- Identify how the duty to accommodate does not guarantee an outcome but requires a process.
- Develop a process that performs an individual investigation of a worker with disabilities' needs and characteristics.
- Practice the development of creative solutions that lead to reasonable accommodation.
- Learn the legal responsibilities of the employer, unions and workers in the accommodation process so that a collaborative approach can be adopted.
- Explore the paradigm shift from managing disability to preventing work disability that integrates health & safety practices with return to work solutions to produce a new proactive approach to RTW that will result in lower human and financial costs.

Audience: OH&S Committee Members, Managers, Worker Representatives, Supervisors, anyone with RTW responsibilities.

ACCOMMODATING MENTAL HEALTH ISSUES RTW 102

The objective of this workshop is to provide participants with the tools to develop strategies to assist workers with mental health issues, individually and collectively; and return them to long-term healthy and productive employment using the law, and evidence-based best practices.

In this course participants will:

- Learn about the myths and facts of mental illness.
- Identify the stigma associated with mental illness.
- Review the law regarding the accommodation of mental health issues.
- Experience strategies to effectively accommodate workers with mental health issues.
- Review effective strategies and tools to produce an action plan to create a supportive environment conducive to the accommodation of mental health.

Audience: OH&S Committee Members, Managers, Worker Representatives, Supervisors, anyone with RTW responsibilities.

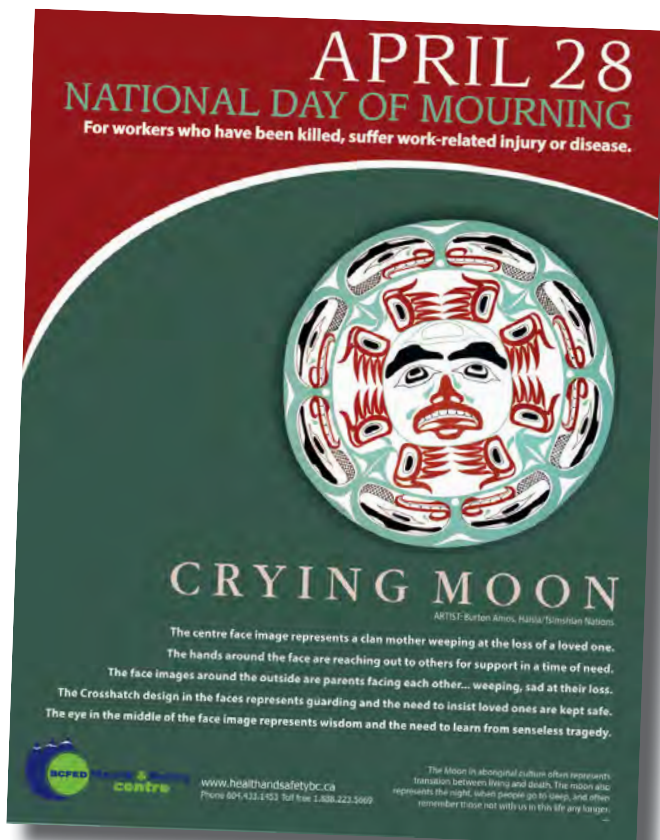
Prerequisite: Completion of the Improving Return to Work Outcomes course is required before taking this course

RETURN TO WORK (RTW) PROGRAM DEVELOPMENT & ASSESSMENT ON REQUEST ONLY

We can provide in-house coaching for RTW program structure and implementation, and elements of an effective RTW plan. The goal of our services is to promote new evidence-based Return to Work principles and strategies designed to produce effective, efficient, sustainable Return to Work outcomes that provide therapeutic value to employees with disabilities. By doing so, along with utilizing disability prevention principles, we can ensure that workplace Return to Work practices comply with all applicable legislation and eliminate unnecessary costs.

Disability prevention requires employer and union involvement, support and accountability. Both are key contributors in the process, participating actively as decision-makers, planners and coordinators of interventions and services. It is important for both labour and management to assess their joint capacities for responding to injury and disability. This often requires an initial analysis of joint strengths and weaknesses, as well as an assessment of the resources available to properly manage accommodation and Return to Work activities among workers with disabilities. In the final analysis, how you make decisions at the strategic level is just as important as the decision itself. The best decision in the world is nothing without a powerful consensus for action.

Contact the Centre for more information.



EMERGENCY PREPAREDNESS

EMGP 101

(UPDATED)

No workplace is immune from potential emergencies or disasters. This course provides participants with a fundamental understanding of the planning and preparations needed to assist workplaces to respond before, during and after an emergency/disaster in order to reduce the effects.

In this course participants will:

- Learn the many components of emergency preparedness plans.
- Identify legal obligations to develop emergency preparedness plans.
- Discuss how Joint Health and Safety Committees should be involved in the development and implementation process.

Audience: OH&S Committee Members, Managers, Worker Representatives and Supervisors.

WOMEN'S HEALTH & SAFETY IN THE WORKPLACE

WOM 101

All workers face health and safety issues at work - injuries, workplace hazards, diseases, and stress. Many of these issues have a gender dimension - they affect women in particular ways.

The course provides participants the opportunity to develop their knowledge and skills to identify, assess and control workplace hazards from a woman's perspective.

It is geared to health and safety committee members, and to all women who want to know more about how to make our workplaces and lives safer and healthier.

In this course participants will:

- Discuss how women's health (including reproductive health) is affected by toxic workplace substances, work design & work organization.
- Learn about workplace stresses such as violence (including domestic violence), bullying and harassment.

Audience: OH&S Committee Members, Managers, Worker Representatives and Supervisors.

Prerequisite: Completion of the OH&S Part 1 course is required before taking this course.



STRAINS, ACHES & PAINS: WHAT JOINT OH&S COMMITTEES NEED TO KNOW ABOUT ERGONOMICS

ERGO 101

This course is designed to provide OH&S Committee members with the knowledge and skills to identify ergonomic problems at the workplace and ways of finding solutions.

In this course participants will:

- Learn about common health effects from MSI injuries.
- Learn how to comply with existing ergonomics legislation.
- Learn how to identify ergonomic hazards, learn risk assessment techniques and generate solutions to deal with hazards.
- Learn strategies to assist in implementing an effective prevention program.
- Have an opportunity to put theory into practice in the exercise, "Fix That Job".

*** Office, Healthcare and Hospitality sector specific versions available on request**

Audience: OH&S Committee Members, Managers, Worker Representatives and Supervisors.

BUILDING PSYCHOLOGICALLY HEALTHY WORKPLACES

BULLYING & HARASSMENT **B&H 101**

Workplace bullying and harassment can take many forms, including verbal aggression, spreading malicious rumours, personal attacks, hazing, cyber bullying and other intimidating or humiliating behaviours. If workplace bullying and harassment is not addressed, it can lead to lost productivity, anxiety, and sometimes even suicidal or homicidal thoughts or actions.

Bullying and harassment should not be confused with a manager or supervisor exercising authority as part of his or her job. It is therefore important that all workers understand what workplace bullying and harassment is and what it is not. It is also equally important for workers to know what steps they need to take when witnessing or being a victim.

Workplace bullying and harassment is an occupational hazard and therefore all of the sections of the Workers Compensation Act that prevent workers from exposure to hazards are applicable. Joint Occupational Health & Safety Committees need to understand their role in taking reasonable steps to eliminate or minimize workplace bullying and harassment.

In this course participants will:

- Define workplace bullying and harassment under both human rights law and health & safety law.
- Recognize the significant negative impact on individuals and organizations.
- Determine sources and root causes of workplace bullying and harassment.
- Create effective proactive strategies to address workplace bullying and harassment.
- Identify the requirements of WCB workplace bullying and harassment policies and their application.

Audience: OH&S Committee Members, Managers, Worker Representatives and Supervisors.

**A half-day version of this eight-hour course for Workers & Management general awareness is available on request. Request 'B&H Short'.*

STRESS IN THE WORKPLACE

STRESS 101

This course is designed to identify work-related stressors and to develop effective corrective actions to eliminate or minimize the exposures to toxic stressors. The course will discuss the role of the Joint Occupational Health & Safety Committee, Managers and Supervisors in developing and implementing proactive prevention strategies to reduce workplace stress. This is not a time management or coping strategies course.

In this course participants will:

- Discuss what toxic stress is and how it affects our health.
- Learn about the contributing organizational and personal safety stressors in the workplace.
- Develop prevention strategies to eliminate or minimize toxic workplace stress.
- Review effective tools including the Psychological Health and Safety in the Workplace Standard (CSA), Mental Injury Toolbox (OHCOW) and Guarding Minds at Work (CMHA).

Audience: OH&S Committee Members, Managers, Worker Representatives and Supervisors.

UNDERSTANDING & IMPLEMENTING THE NEW CSA PSYCHOLOGICAL HEALTH STANDARD

CSA 101 (NEW)

Mental health in the workplace is an issue that impacts all workplaces and can no longer be ignored. Keeping the workforce healthy and productive is simply smart business and good for the bottom line.

The vision for a psychologically healthy and safe workplace is one that actively works to prevent harm to worker psychological health, including in negligent, reckless, or intentional ways, and promotes psychological well-being.

A voluntary CSA Standard (CAN/CSA-Z1003-13/BNQ 9700-803/2013 - Psychological health and safety in the workplace - Prevention, promotion, and guidance to staged implementation) has been developed to help organizations strive towards this vision as part of an ongoing process of continual improvement. While there are many factors external to the workplace that can impact psychological health and safety, the CSA Standard addresses those psychological health and safety aspects within the control, responsibility, or influence of the workplace that can have an impact within, or on, the workforce.

In this course participants will:

- Gain an understanding of this new CSA standard.
- Review of the current landscape for a psychologically healthy and safe workplace.
- Learn strategies for implementing an effective psychologically healthy and safe workplace program in your workplace.

Audience: OH&S Committee Members, Managers, Worker Representatives and Supervisors.

Prerequisite: Completion of the Preventing Workplace Stress course is required before taking this course. OHS Committee/ Supervisor Part 1&2 recommended.

SECTOR SPECIFIC

FEDERAL HEALTH & SAFETY COMMITTEE & SUPERVISOR EDUCATION

Certain workplaces such as Railways, Airports, Inter-Provincial Transport, Pipelines, Broadcasting Systems, Marine Shipping, Telephone Systems and Federal Government employees fall under federal health & safety legislation (Canada Labour Code Part II). This legislation specific program aims to prepare OH&S Committee members in the federal jurisdiction to play an active and confident role on joint committees. A majority of our courses are available in a 'Federal' legislation format.

Contact the Centre for a current list of Federal Sector specific OH&S courses.

2017 Course Schedule <small>*Funded by BC WCB</small>	Federal OHS Committee Part 1	Federal OHS Committee Part 2	Federal Supervisor OHS Part 1	Federal Supervisor OHS Part 2	Hazardous Occurrence Investigations	Federal Risk Assessments	Federal Prevention of Violence
	Vancouver	2-May 5-Dec	3-May 6-Dec	2-May 5-Dec	3-May 6-Dec	4-May 15-Dec	12-Sep
Richmond	6-Sep	7-Sep	6-Sep	7-Sep	8-Sep		
Delta	18-Oct	19-Oct	18-Oct	19-Oct	20-Oct		
Victoria	3-Oct	4-Oct	3-Oct	4-Oct	5-Oct	9-Nov	29-Jun
Prince Rupert	28-Mar	29-Mar	20-Jun	21-Jun	22-Jun	21-Jun	

MINING SECTOR HEALTH & SAFETY COMMITTEE & SUPERVISOR EDUCATION

ON REQUEST ONLY

In British Columbia, mining operations and exploration activities fall under: The Health, Safety and Reclamation Code for Mines in British Columbia. Our courses are tailored to reference this specific legislation.

Contact the Centre for a current list of Mining Sector specific OH&S courses.

2017 Advanced OH&S Skills Development Summer School

at The Coast Blackcomb Suites at Whistler

The BCFED Health & Safety Centre is offering certificate programs combining several of our most popular courses at our OH&S Summer School in Whistler, BC. Participants completing the program (4 days, Mon.-Thurs.) will receive a *Certificate in OH&S Fundamentals*. OH&S Committee Members, Co-Chairs, Safety Coordinators, Supervisors and Managers are all encouraged to attend. This is a great opportunity to take many of our eight hour courses in a compressed time frame and get your skills up to speed quickly.

JUNE 5-8

OCCUPATIONAL HEALTH AND SAFETY
[Occupational Health & Safety Part 1 & 2, Incident Investigations, Understanding and Conducting Risk Assessment]

JUNE 5-8

RETURN TO WORK: GETTING BEYOND LIGHT DUTIES
[Improving Return to Work Outcomes (in depth), Accommodating Mental Health Issues]

JUNE 12-15

BUILDING PSYCHOLOGICALLY HEALTHY WORKPLACES
[Bullying & Harassment, Preventing Workplace Stress, Accommodating Mental Health Issues, Implementing the CSA Mental Health Standard]

JUNE 12-15

SUPERVISOR OH&S RESPONSIBILITIES
[Supervisor OH&S Responsibilities Part 1 & 2, Incident Investigations, Understanding and Conducting Risk Assessments]

Course Cost:
\$700 Per Person
all 4 days, Mon-Thurs)

REGISTER AT
healthandsafetybc.ca
For more information about content,
contact the Centre at 1.888.223.5669



2017 Course Schedule

*Funded by BC WCB

OHS Committee Part 1	OHS Committee Part 2	Committee Effectiveness	Supervisor OHS Part 1	Supervisor OHS Part 2	Incident Investigations	Risk Assessments	Improving Return to Work Outcomes	Accommodating Mental Health	Introduction to Occupational Health	Ergonomics	Prevention of Violence	Emergency Preparedness	Women's Health & Safety	Bullying & Harassment	Preventing Workplace Stress	CSA Psychological Health Standard
----------------------	----------------------	-------------------------	-----------------------	-----------------------	-------------------------	------------------	-----------------------------------	-----------------------------	-------------------------------------	------------	------------------------	------------------------	-------------------------	-----------------------	-----------------------------	-----------------------------------

Lower Mainland & Fraser Valley

New Westminster	2-May	3-May	5-May	25-Apr	26-Apr	4-May	27-Apr					11-May	12-May	8-Mar	9-May	10-May	
	5-Dec	6-Dec	7-Dec	19-Dec	20-Dec			19-Dec	13-Dec	8-Dec	13-Dec		15-Dec			12-Dec	14-Dec
Surrey	3-Oct	4-Oct	5-Oct	11-Oct	12-Oct	5-Oct	6-Oct		28-Sep			11-Oct	12-Oct		26-Sep	27-Sep	29-Sep
Whistler	5-Jun	6-Jun		12-Jun	13-Jun	7-Jun	8-Jun		14-Jun						12-Jun	13-Jun	15-Jun
Abbotsford	5-Apr	6-Apr	7-Apr								1-Mar						
Vancouver	22-Mar	23-Mar				24-Mar	8-Dec	16-May	17-May	11-May	28-Feb	14-Dec		12-Dec	6-Dec		18-May
	11-Apr	12-Apr	13-Apr			7-Dec											
	20-Jun	21-Jun															
	6-Sep	7-Sep															
Squamish	7-Mar	8-Mar															

Sunshine Coast

Gibsons	12-Sep	13-Sep															
Powell River	14-Sep	15-Sep															

North

Burns Lake	28-Mar	29-Mar	28-Mar			29-Mar											
Dawson Creek	19-Apr	20-Apr	21-Apr														
Fort St. John	26-Sep	27-Sep	28-Sep	26-Sep	27-Sep	28-Sep											
Haida Gwaii	9-Aug			8-Aug		10-Aug											
Mackenzie	20-Sep	21-Sep	24-Oct			23-Oct											
Prince Rupert	28-Mar	29-Mar	30-Mar			30-Mar											
Smithers	30-Mar	31-Mar	31-Mar			30-Mar											
Vanderhoof	25-Apr																
Terrace	20-Jun	21-Jun	22-Jun	20-Jun	21-Jun	22-Jun	21-Jun				21-Feb						
Prince George	24-May	25-May	16-May	27-Jun	28-Jun	29-Jun	19-Sep										
	19-Sep	20-Sep	21-Sep			21-Sep		28-Jun	29-Jun	20-Oct	19-Oct	19-Oct			27-Jun	19-Oct	20-Oct

Kootenays

Castlegar	30-May	31-May	1-Jun			1-Jun				31-May		2-Jun					
Cranbrook	25-May	26-May	22-Jun			23-Jun		7-Mar	8-Mar					30-May			9-Mar
Nelson	4-Apr			4-Apr	5-Apr		6-Apr				5-Apr					6-Apr	
Creston	16-May	17-May	19-May			18-May											
Sparwood	21-Sep	22-Sep															

Vancouver Island

Campbell River	31-Oct	1-Nov															
Nanaimo	19-Apr	20-Apr	21-Apr	19-Apr	20-Apr	21-Apr						28-Jun					
Victoria	9-May	10-May	11-May							10-Nov	28-Feb	29-Jun	26-Jun				
	7-Nov	8-Nov	9-Nov	14-Nov	15-Nov	16-Nov	9-Nov	8-Nov	16-Nov					7-Nov	15-Nov	17-Nov	

Okanagan

Kelowna	12-Jun	13-Jun	14-Jun								28-Feb		15-Jun				
	21-Nov	22-Nov	23-Nov	28-Nov	29-Nov	23-Nov	30-Nov	22-Nov	29-Nov	29-Nov		1-Dec		30-Nov	21-Nov	28-Nov	30-Nov
Oliver	22-Aug	23-Aug					24-Aug										
Penticton	5-Jun	6-Jun															
Vernon	7-Jun	8-Jun															

Interior

Quesnel	25-Apr	26-Apr	27-Apr	25-Apr	26-Apr	27-Apr											
Williams Lake	9-May	10-May	11-May	9-May	10-May	11-May											
Salmon Arm	29-Aug	30-Aug															
100 Mile House	7-Feb	8-Feb															
Kamloops	10-Apr																
	24-Oct	25-Oct	26-Oct	24-Oct	25-Oct	26-Oct	31-Oct	2-Nov		2-Nov	28-Feb	2-Nov	1-Nov		31-Oct	1-Nov	

PARTICIPANT COST: \$135*
 * When registering 14 days in advance.

All Courses are eight hours in length from 8:30am to 4:30pm.

Course dates and offerings are subject to change, please check healthandsafetybc.ca for updates.

Don't see your Community on our public schedule? Interested in in-house training options?

If you have a minimum of 10 people we can respond to custom requests. Contact the Centre for availability and a cost quote.